

SOIL NAILS & ROCKBOLTS



CONTENTS

2 Gripforce® Soil Nails & Rockbolts

3 Fibregrip® Soil Nails & Rockbolts

4 Fibregrip® Fully Threaded Bar

5,6 Standard & High Load Nut Assemblies

7 Non-Metallic End Plates & Web Plates

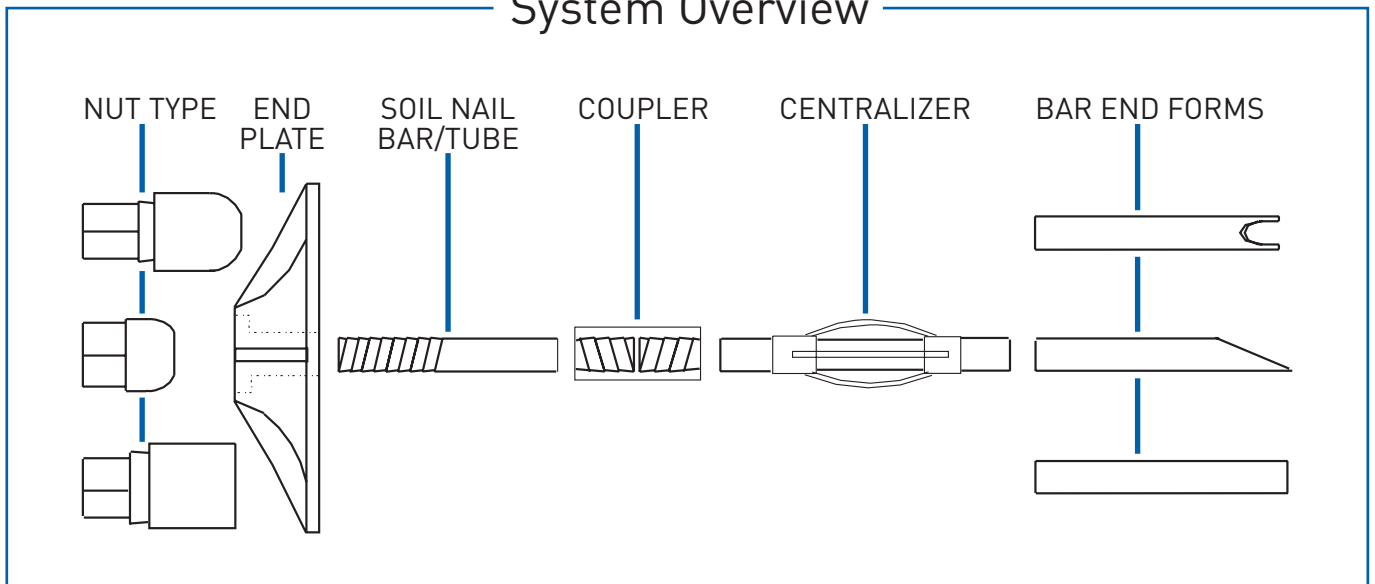
7 Couplers & Centralisers

8 Grout Socks & Adaptors

8,9 Spinners

10 Drives & Bodies

System Overview



We stock a comprehensive range of Drill Steels, Drill Bits and Accessories and also Drilling Machines and Grout Pump Systems.
For information please request a brochure or visit our website.

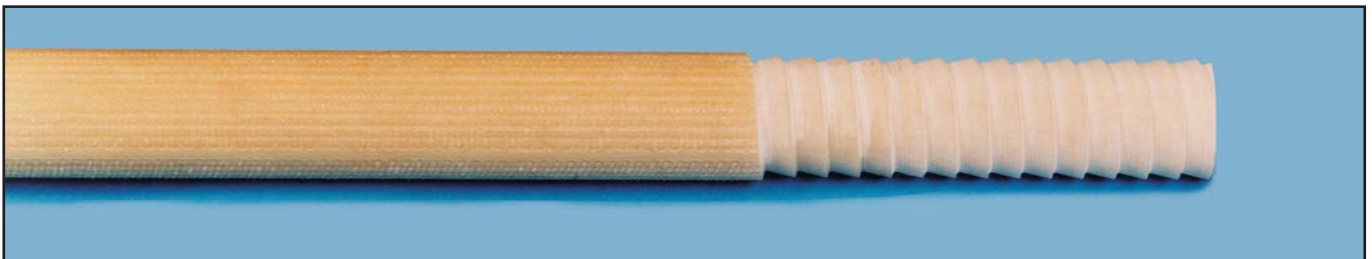


Unit 19, Redbrook Business Park, Wilthorpe Road, Barnsley, South Yorkshire, S75 1JN.
Telephone: 01226 280567 Fax: 01226 731563
E mail: tech@weldgrip.com www.weldgrip.com
Service Centre: Telephone: 01226 785553

GRIPFORCE® SOIL NAILS & ROCKBOLTS



Gripforce® is a Vinylester resin bar or tube which is BBA Approved. It is available in lengths up to 12 metres without couplers and is suitable for a wide range of applications in the Civil & Tunnelling industries. For detailed specification please see our product leaflet.



GRIPFORCE® SOLID BAR

Reference Number	Bar Diameter (mm)	Thread Pitch (mm)	Thread Length (mm)	UTS of Bar (kN)
33GFVR22	22	6	150-200	385
33GFVR22/P	22	6	150-200	385
33GFVR25	25	6	150-200	508
33GFVR25/P	25	6	150-200	508
33GFVR31	31	8	150-200	725

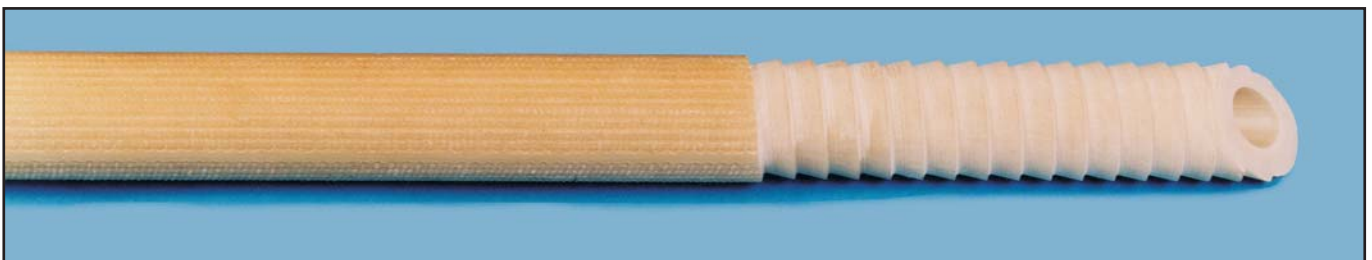
Please specify cut length required, Bar is available in lengths up to 12 metres without couplers.

Specify cusped or chamfered end form for use with resin capsules.

See pages 5, 6, 7, 8 and 9 for Nut Assemblies and Accessories available for use with this product.

NOTE

/P denotes that the nail can be used with a positive drive adaptor for spinning into resin capsules. The non-threaded end can be specified as cusped, wedge or straight



GRIPFORCE® TUBE

Reference Number	Tube Diameter OD/ID (mm)	Thread Pitch (mm)	Thread Length (mm)	UTS of Tube (kN)
33GFVT22/12	22/12	6	150-200	239
33GFVT31/15	31/15	8	150-200	447

Please specify cut length required, Tube is available in lengths up to 12 metres without couplers.

See pages 4, 5, 6, 7 and 8 for Nut Assemblies and Accessories available for use with this product.

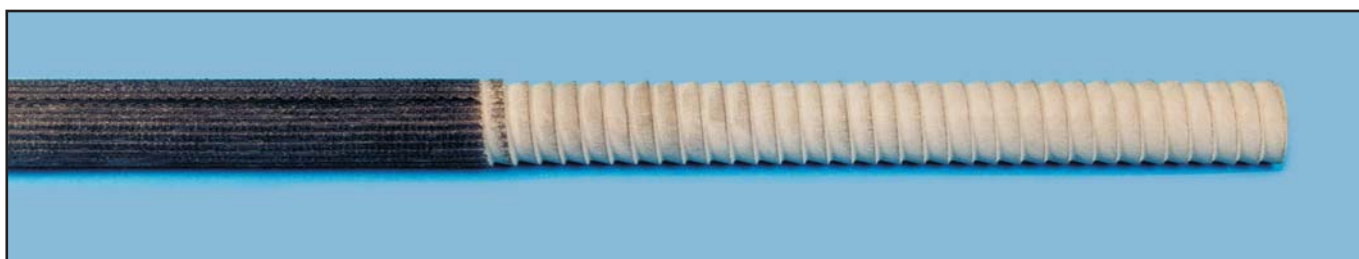
Key to the product reference number **33GFVT31/15**

PRODUCT TUBE SIZE

FIBREGrip® SOIL NAILS & ROCKBOLTS



Fibregrip® is a Polyester resin bar or tube which has been subject to extensive mechanical testing by an accredited UCAS test house. It is available in lengths up to 12 metres without couplers and is suitable for a wide range of applications in the Civil, Tunnelling and Mining industries. For detailed specification please see our product leaflet.



FIBREGrip® SOLID BAR

Reference Number	Bar Diameter (mm)	Thread Pitch (mm)	Thread Length (mm)	UTS of Bar (kN)
33FIB22ROD	22	6	150-200	385
33FIB22ROD/P	22	6	150-200	385
33FIB25ROD	25	6	150-200	508
33FIB25ROD	25	6	150-200	508
33FIB31ROD	31	8	150-200	725

Please specify cut length required, Bar is available in lengths up to 12 metres without couplers.

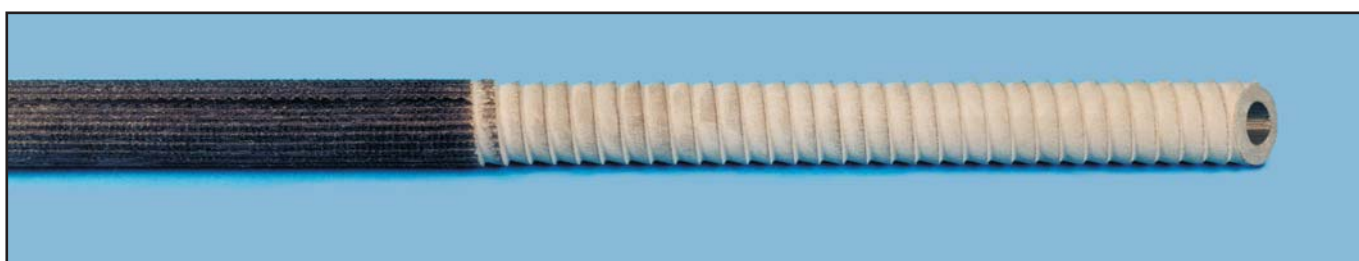
Specify cusped or chamfered end form for use with resin capsules.

See pages 5, 6, 7, 8 and 9 for Nut Assemblies and Accessories available for use with this product.

NOTE

/P denotes that the nail can be used with a positive drive adaptor for spinning into resin capsules.

The non-threaded end can be specified as cusped, wedge or straight



FIBREGrip® TUBE

Reference Number	Tube Diameter OD/ID (mm)	Thread Pitch (mm)	Thread Length (mm)	UTS of Tube (kN)
33FIB22/12T	22/12	6	150-200	239
33FIB31/15T	31/15	8	150-200	447

Please specify cut length required, Tube is available in lengths up to 12 metres without couplers.

See pages 4, 5, 6, 7 and 8 for Nut Assemblies and Accessories available for use with this product.

Key to the product reference number **33GFVT31/15**

PRODUCT
TUBE
SIZE

FIBREGrip® SOIL NAILS & ROCKBOLTS

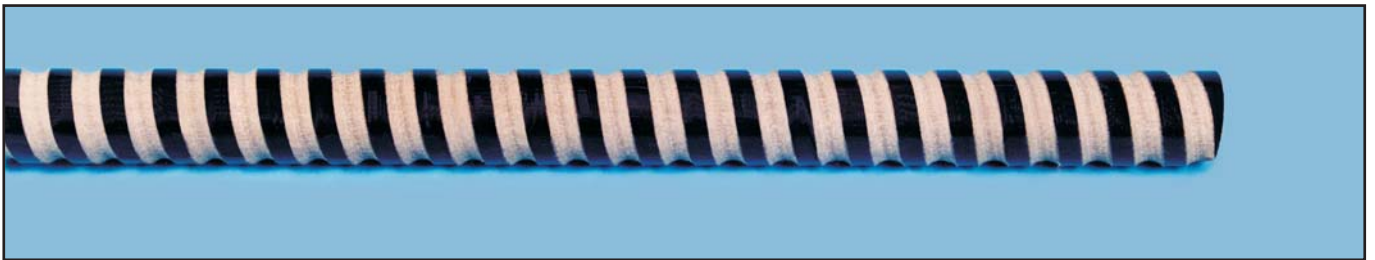


FIBREGrip FT 500 FULLY THREADED BAR & TUBE

Fibregrip FT 500 polyester fully threaded bar and tube is available in lengths up to 12 metres.

The advantage given by the continuous thread enables lengths to be cut to size on site, or additional lengths added by couplers, which allows more flexibility during installation.

FT 500 is suitable for a wide range of applications in the Civil, Tunnelling and Mining Industries. For detail specifications please see our product leaflet.



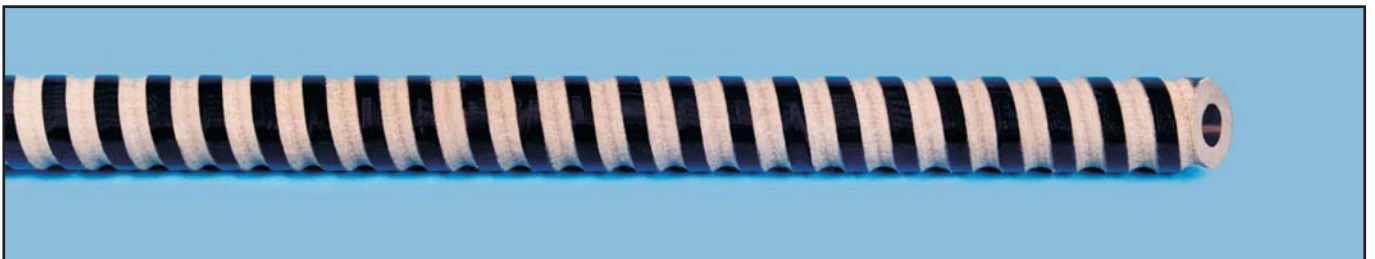
FIBREGrip® FULLY THREADED SOLID BAR

Reference Number	Bar Diameter (mm)	Thread Pitch (mm)	UTS of Bar (kN)
33FIB24ROD	24	13	540

Please specify cut length required, Bar is available in lengths up to 12 metres without couplers.

Specify cusped or chamfered end form for use with resin capsules.

See pages 6, 7, 8 and 9 for Nut Assemblies and Accessories available for use with this product.



FIBREGrip® FULLY THREADED TUBE

Reference Number	Tube Diameter OD/ID (mm)	Thread Pitch (mm)	UTS of Tube (kN)
33FIB24/10T	24/10	13	300

Please specify cut length required, Tube is available in lengths up to 12 metres without couplers.

Please see pages 6, 7 and 8 for Nut Assemblies and Accessories available for use with this product.

Key to the product reference number **33GFVT31/15**

PRODUCT
TUBE
SIZE

STANDARD NUTS



Reference Number	Bar / Tube Diameter (mm)	Thread Pitch (mm)	Nut Type	UTS of Threaded End (kN)	
				Bar	Tube
33NUT22/DN/FR/6	22	6	FR	77	68
33NUT22/DN/FR/8	22	8	FR	80	70
33NUT22/DN/BO/8	22	8	BO	80	70
33NUT25/DN/FR/6	25	6	FR	77	-

PLEASE NOTE: Nut Types are **FR** = Free-Running, **BO** = Burst-Out.

HIGH LOAD NUT ASSEMBLIES



HIGH LOAD NUT ASSEMBLIES WITH FIBREGLASS CONE

Assembly with Burst-Out Nut for 22mm Bar only

Reference Number	Bar / Tube Diameter (mm)	Thread Pitch (mm)	Nut Type	UTS of Threaded End (kN)	
Complete Assembly 33HLF22/BO/6	22	6	BO	77	
Nut Only 33NUT22/HL/BO/6	22	6	BO	-	
Cone Only 33FIB60/FIBRECONE	22	-	-	-	



Assembly with Free-Running Nut for 22mm Bar or Tube

Reference Number	Bar / Tube Diameter (mm)	Thread Pitch (mm)	Nut Type	UTS of Threaded End (kN)	
Complete Assembly 33HLF22/FR/6	22	6	FR	77	68
Nut Only 33NUT22/HL/FR/6	22	6	FR	-	-
Cone Only 33FIB60/FIBRECONE	22	-	-	-	-



Assembly with Free-Running Nut for 25mm Bar Only

Reference Number	Bar Diameter (mm)	Thread Pitch (mm)	Nut Type	UTS of Threaded End (kN)	
Complete Assembly 33HLF25/FR/6	25	6	FR	139	
Nut Only 33NUT25/HL/FR/6	25	6	FR	-	
Cone Only 33FIB60/FIBRECONE	25	-	-	-	



Assembly with Free-Running Nut for 31mm Bar or Tube

Reference Number	Bar / Tube Diameter (mm)	Thread Pitch (mm)	Nut Type	UTS of Threaded End (kN)	
Complete Assembly 33HLF31/FR/8	31	8	FR	201	201
Nut Only 33NUT31/HL/FR/8	31	8	FR	-	-
Cone Only 33FIB60/FIBRECONE	31	-	-	-	-

Key to the product reference number **33GFVT31/15**



HIGH LOAD NUT ASSEMBLIES



HIGH LOAD NUT ASSEMBLIES WITH METALLIC CONE

Assembly with Burst-Out Nut for 22mm Bar Only

Reference Number	Bar Diameter (mm)	Thread Pitch (mm)	Nut Type	UTS of Threaded End (kN)
Complete Assembly 33HLM22/BO/6	22	6	BO	198
Nut Only 33NUT22/HL/BO/6	22	6	BO	-
Cone Only 33FIB/STEELCONE	22	-	-	-



Assembly with Free-Running Nut for 22mm Bar Only

Reference Number	Bar Diameter (mm)	Thread Pitch (mm)	Nut Type	UTS of Threaded End (kN)
Complete Assembly 33HLM22/FR/6	22	6	FR	198
Nut Only 33NUT22/HL/FR/6	22	6	FR	-
Cone Only 33FIB/STEELCONE	22	-	-	-



Assembly with Free-Running Nut for 25mm Bar Only

Reference Number	Bar Diameter (mm)	Thread Pitch (mm)	Nut Type	UTS of Threaded End (kN)
Complete Assembly 33HLM25/FR/6	25	6	FR	198
Nut Only 33NUT25/HL/FR/6	25	6	FR	-
Cone Only 33FIB/STEELCONE	25	-	-	-

NUT ASSEMBLIES FOR FT-500 THREADED BAR & TUBE



Non-Metallic Nut Assemblies for Bar or Tube

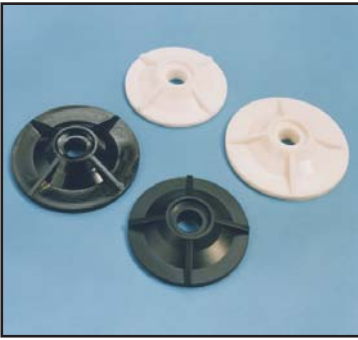
Reference Number	Bar / Tube Diameter (mm)	Thread Pitch (mm)	Nut Type	UTS of Threaded End (kN)	
				Bar	Tube
33FIB24/FN/FR/C	24	13	FR	80	80
33FIB24/FN/BO/C	24	13	BO	80	80

PLEASE NOTE: Nut Types are **FR** = Free-Running, **BO** = Burst-Out.

Key to the product reference number **33GFVT31/15**

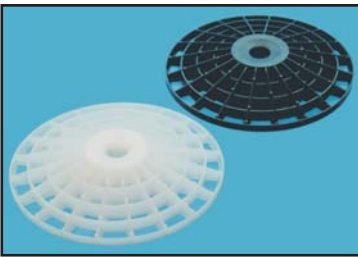
PRODUCT TUBE SIZE

NON-METALLIC END PLATES



Reference Number	Hole Diameter (mm)	Plate Diameter (mm)	Load Capacity (kN)	Colour
99DP150/25/HLW	25	150	70	White
99DP150/25/HLB	25	150	70	Black
99DP150/30/HLW	30	150	70	White
99DP150/30/HLB	30	150	70	Black
99DP130/35/HLW	35	130	71.5	White

WEB PLATES



Reference Number	Hole Diameter (mm)	Plate Diameter (mm)	Load Capacity (kN)	Colour
99DPFR200/WEB/25	25	200	60	White
99DPFR250/WEB/25	25	250	60	White
99DP UV250/WEB/HS	25	250	60	Black*

*Black – for where UV protection is required

COUPLERS



Reference Number	Bar or Tube Diameter (mm)	Coupler Dimensions (mm)	Load Capacity (kN)
33FIB22/HDCOUPLER	22	45 x 98	80
33FIB22/COUPLER	22	27 x 100	20
33STL24/COUPLER	24	40 x 110	90
33FIB25/COUPLER	25	45 x 98	80
33FIB31/COUPLER	31	51 x 125	80

CENTRALISERS



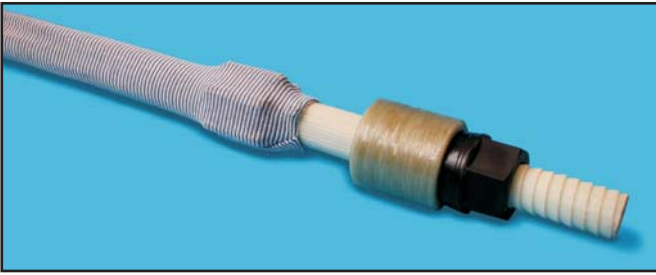
Reference Number	Bar or Tube Diameter (mm)
33FIB22/LANTERNSPACER	22
33FIB25/LANTERNSPACER	25
33FIB31/LANTERNSPACER	31
33FIB22/SPLIND60 Green	22
33FIB25/SPLIND60 Blue	25
33FIB31/SPLIND60 Yellow	31

Please Note: Lantern dimensions are made to customer requirements, please specify when ordering.

Key to the product reference number **33GFVT31/15**

PRODUCT TUBE SIZE

GROUT SOCKS



Reference Number	Roll Length
33FIBPOLY SOCK	50m

Tubes supplied with bandage fitted are made to order - Please specify length required when ordering.

GROUT ADAPTORS



Reference Number	Tube Diameter (mm)
99EXT22/GADAPT	22/12
99EXT24/GADAPT	24/12
99EXT32/GADAPT	31/15

ONE PIECE BOLT SPINNERS



19mm DRIVE SPINNER 36mm HEXAGON SOCKET

Reference Number	Vocab Number	Body Length (mm)
SPI1/170/19	02128564	170
SPI1/250/19	02129843	250



25mm SQUARE DRIVE 36mm HEXAGON SOCKET

Reference Number	Vocab Number	Body Length (mm)
SPI1/130/25SQ	02128511	130
SPI1/200/25SQ	02128512	200

Key to the product reference number SPI1/200/25SQ



TWO PIECE BOLT SPINNER BODIES



Reference Number	Vocab Number	Body Length (mm)
MSB170/36H	02128520	170
MSB250/36H	02128510	250

A Drive is required for these two items - see page 10

THREE PIECE HEAVY DUTY BOLT SPINNERS



19mm DRIVE 36mm HEXAGON SOCKET

Reference Number	Vocab Number	Body Length (mm)
SPIHD/350/19	02128565	350
SPIHD/500/19	02128566	500
SPIHD/1000/19	02128579	1000

25mm SQUARE DRIVE 36mm HEXAGON SOCKET

Reference Number	Vocab Number	Body Length (mm)
SPIHD/350/25SQ	02128587	350
SPIHD/500/25SQ	02128588	500
SPDIHD/1000/25SQ	02128589	1000

POSI-DRIVE SPINNER



Reference Number	Vocab Number	Overall Length (mm)
SPIRILOBEBODY	55843328	100

A Drive is required for this item - see page 10

Key to the product reference number SPI1/200/25SQ

PRODUCT BODY LENGTH DRIVE

DRIVES & BODIES



19mm HEXAGON DRIVE

Reference Number	Vocab Number	Overall Length (mm)
MSD 79/19	55843313	79

25mm SQUARE DRIVE DRIVE

Reference Number	Vocab Number	Overall Length (mm)
M 25 SQ ADM	55843314	65

SCROLL ROD DRIVE

Reference Number	Vocab Number	Overall Length (mm)
MSD79/SCROLL	55843316	79

M30 BOLT BODY

Reference Number	Vocab Number	Overall Length (mm)
MSB/M30M24F	55843312	60

ENGLISH BOLT SPINNER c/w 19mm HEXAGON DRIVE

Reference Number	Vocab Number	Overall Length (mm)
SPIM30/19	55843321	

ENGLISH BOLT SPINNER c/w 25mm SQUARE DRIVE

Reference Number	Vocab Number	Overall Length (mm)
SPIM30/25SQ	55843322	

ENGLISH BOLT SPINNER c/w SCROLL DRIVE

Reference Number	Vocab Number	Overall Length (mm)
SPIM30/SCROLL	55843323	